

BT8390-WFK WALL FIXING KITS

The BT8390-WFK1 and BT8390-WFK2 are wall fixing kits designed to mount System X rails (see BT8390) directly to a wall. The WFK1 features a slim design for a close to the wall install when using fixed or tilting System X interface arms. The WFK2 has an increased depth which allows the use of micro-adjustment arms or tilting arms when a greater tilt angle is required.

**Please note the BT8390-VESA400MAF must be used with the BT8390-WFK2*

FEATURES

- Interface arms can slide along the rail providing unlimited lateral screen adjustment
- All mounting hardware included



BT8390-WFK1 designed for a close to the wall installation



BT8390-WFK2 is designed with a greater depth from the wall

**FIT
HORIZONTAL
RAILS TO
WALLS**



BT8390-WFK1



BT8390-WFK2



SPECIFICATION

Steel thickness	5mm
BT8390-WFK1 distance from wall	5mm
BT8390-WFK2 distance from wall	19mm
Colour	Black

BT8390-CFK COLLAR FIXING KIT

The BT8390-CFK is a fixing kit which allows BT8390 rails to be fitted to B-Tech accessory collars for use in a variety of different pole mounted configurations, such as ceiling mounted menu boards and video walls.

FEATURES

- 5mm thick steel to provide a secure installation for heavier loads
- Mounts to 2x BT7841 2-Piece Collar or 1x BT7051 Heavy Duty Collar
- All mounting hardware included



Fixes to 2x BT7841 2-Piece Collars



Used for ceiling mounted menu boards and video walls

**FIT
HORIZONTAL
RAILS TO
POLES**



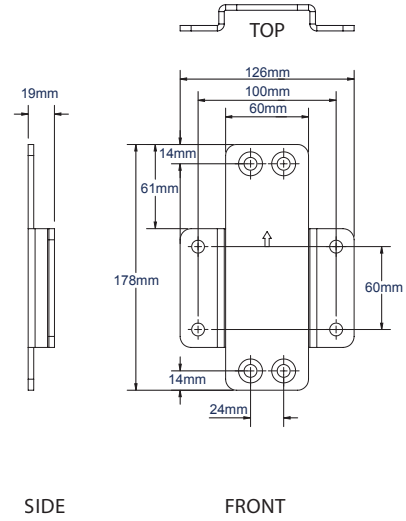
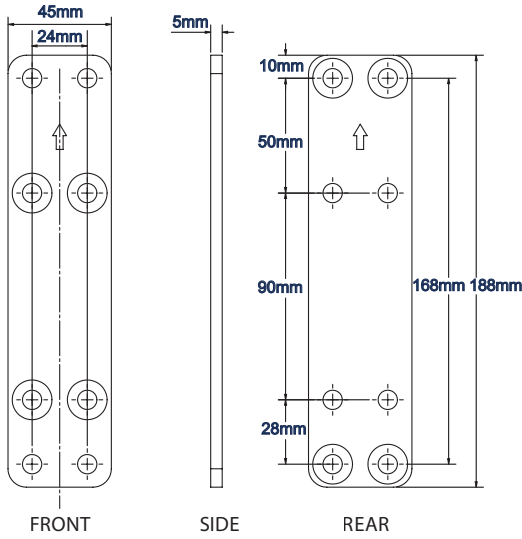
SPECIFICATION

Steel thickness	5mm
Colour	Black

WALL FIXING KITS

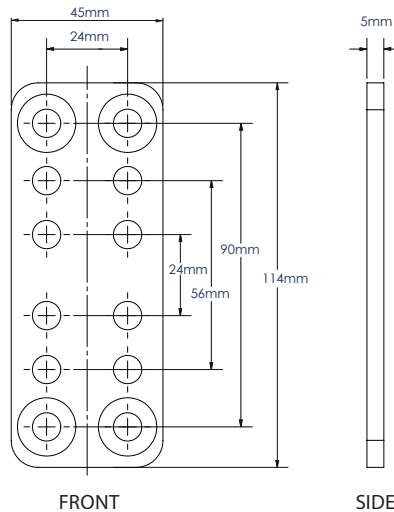
BT8390-WFK1

BT8390-WFK2



COLLAR FIXING KIT

BT8390-CFK

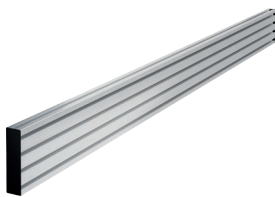


PACKING INFORMATION

COLOUR:	ORDER REF:	EAN CODE:	MASTER CARTON QTY:	INNER CARTON QTY:	MASTER CARTON WEIGHT:	MASTER CARTON CUBE
Black	BT8390-WFK1/B	5019318501265	50	0	22.5kg	0.04cbm
Black	BT8390-WFK2/B	5019318501272	20	0	15.5kg	0.059cbm
Black	BT8390-CFK/B	5019318501289	80	0	19kg	0.029cbm

RELATED PRODUCTS

BT8390-070/150/175/200



Mounting Rail attaches to columns using BT8390-JPK joining kits

BT7850



Poles attach to mounting rails using BT8390-CFK collar fixing kit

BT7841



2-Piece Split Collar for ceiling mounted installations

BT7051



Heavy Duty Collar for larger, pole mounted installations

© 2015 B-Tech Professional Limited. All rights reserved. The information in this specification is current technical specifications at the time of print. We reserve the right to change the technical or physical specifications without prior notice. This B-Tech name and logo are registered trademarks of B-Tech International Ltd. B-Tech accepts no liability for loss or damage caused by improper or incorrect installation, use, or maintenance of the product. Any reproduction or transmission of any part of this specification is expressly prohibited unless prior written permission has been granted by B-Tech International Ltd. (BTL)

SS-SYSTEM X FIXING KITS-V1-111215