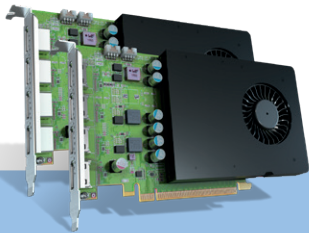


# Video Walls that are Worth the View



## Matrox® D-Series Graphics Cards

- Advanced capabilities
- HDCP compliant
- Proven video wall ecosystem
- Custom control

# Matrox D-Series Graphics Cards

## Video walls that are worth the view.

Purpose-built to drive next-generation video walls, Matrox® D-Series graphics cards power up to four synchronized 4Kp60 displays from a single graphics board. Designed to ensure excellent reliability, stability, and ease of deployment, the D-Series quad-monitor PCI Express® x16 boards are ideal to power video walls for a wide range of commercial and critical 24/7 video wall applications, including control rooms, enterprises, industries, government, military, pro AV, digital signage, security, and more. As part of the Matrox video wall portfolio, D-Series also offers a complete range of video wall software, APIs, SDKs, and libraries, allowing OEMs, system integrators, AV installers, and developers to create custom control functions and applications for any video wall installation.

### Matrox D-Series HDMI & DisplayPort cards

Full-height, Gen 3 PCIe® x16 four-output graphics cards with four native HDMI® or DisplayPort™ connectors deliver the best display density, resolution, and performance for demanding multi-monitor applications.



**D-Series D1450** - Quad HDMI graphics card



**D-Series D1480** - Quad DisplayPort graphics card



### Advanced capabilities

- Drive up to four high resolution displays (HDMI or DisplayPort).
- Experience smooth video playback and graphics performance with up to 4 GB of graphics memory.
- Drive up to 16 synchronized displays and reduce tearing by framelocking up to four D-Series cards together using board-to-board frame lock cables—also save slot space as a separate card is not needed for the synchronization.
- Run the latest professional applications with its support for Microsoft® DirectX® 12, OpenGL®
- Prevent loose cabling with secure connectors.



### HDCP compliant

- Display HDCP-protected content with D-Series graphics cards.
- Capture and display of HDCP-protected content on video walls by coupling D-Series with Matrox Mura IPX capture cards.



### Proven video wall ecosystem

- Add best-in-class, multi-channel 4K capture, encode, decode, and display capabilities by combining D-Series with Matrox Mura IPX capture cards.
- Drive up to 64 1920x1080p60 displays by pairing D-Series with multiple Matrox QuadHead2Go™ multi-monitor controllers.
- Create artistic video walls by pairing D-Series with multiple QuadHead2Go multi-monitor controllers.



### Custom control

- Customize your setup with the easy-to-use Matrox PowerDesk™ desktop management software.
- Deploy tailor-made display configurations including stretched or independent desktops, clone mode, pivot, bezel management, edge overlap, and more.
- Easily manage your video walls with the intuitive Matrox MuraControl™ software.
- Develop custom functions and/or personalized applications using the Matrox video wall APIs, SDKs, and libraries.

# Matrox PowerDesk software

The robust, field-proven Matrox PowerDesk desktop management software for Windows lets you easily configure and manage multi-display setups. It offers professional clients a comprehensive set of tools to deploy and control a variety of display configurations.



## Stretched Desktop

Create an ultra-large desktop to expand a single application across all screens.



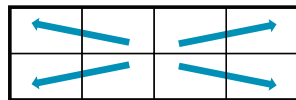
## Independent Desktop

Set displays independently from one another to open different applications within each screen.



## Clone Mode

Duplicate content to show the same information on all displays.



## Joined desktop

Create an ultra-large desktop to expand a single application across outputs on two or more GPUs<sup>1</sup>.



## Edge Overlap

Adjust the number of overlapping pixels between edge-blending projectors to build a seamless, unified image.



## Bezel Management

Compensate for the physical space created by monitor bezels to output a continuous image across multiple displays.



## Pivot Mode

Select any combination of portrait or landscape and set the orientation that works best for you.



## EDID Management

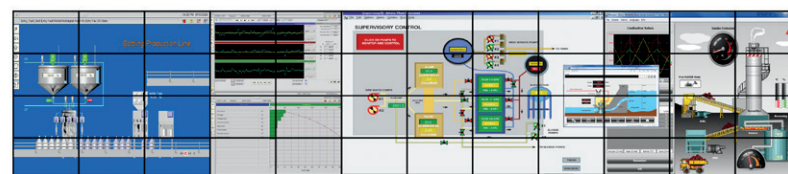
Provide consistent EDID signal to the graphics card to ensure video is displayed correctly.

## Diverse video wall configurations

Matrox D-Series supports numerous types of video walls and helps you create the optimal setup for every need. With a single card you can power four-monitor video walls to deliver high-impact configurations. By combining four cards, you can build larger 16-monitor video walls, or create even larger scale video walls by pairing the D-Series cards with the Matrox QuadHead2Go multi-monitor controller cards or appliances.



View critical information across an expansive configuration



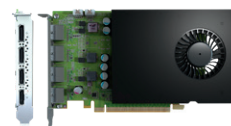
Combine with Matrox QuadHead2Go to build large-scale video walls

<sup>1</sup> Please review the release notes for joined mode limitations.

# Technical specifications



**D-Series 1450 -**  
Quad HDMI graphics card



**D-Series D1480 -**  
Quad DisplayPort graphics card

## Product

Part number	D1450-E4GB	D1480-E4GB
Bus type	PCIe 3.0 x16	
Video output connectors	4x HDMI	4x DisplayPort 1.4
Number of video outputs	4 per card	
Maximum number of cards in a system	4	

## Performance

Maximum resolution	4x 4096x2160 @ 60Hz	4x 5120x3200 @ 60Hz
Memory	4 GB GDDR5	
GPU	NVIDIA®	

## Additional features

HDCP compliance	Yes	
Board-to-board framelock	Yes	
Supported graphics standards	DirectX® 12.0, OpenGL®	
Multi-stream audio	4 audio streams (through HDMI)	4 audio streams (through DisplayPort)
Independent desktop mode	Yes	
Stretched desktop mode	Yes	
Clone mode	Yes	
Pivot mode	Yes	
EDID management	Yes	
Bezel management	Yes	
Edge overlap	Yes	

## Environmental & power consumption

Cooling	Active	
Power consumption	50 W	
Operating Temperature	5 to 55°C (41 to 131°F) near board ambient	

## Hardware

Dimensions	With bracket, fansink, and secure cable solution: Length: 7.928" (20.137cm), Height: 4.999" (12.697cm) PCB only: Length: 6.600" (16.764cm), Height: 4.376" (11.115cm)	
Regulatory compliance class	Class A	Class B
Regulatory compliance	FCC (US), CE (European Union), RCM (Australia/New Zealand), KC (Korea), ICES-3 (Canada)	
Environmental compliance	EU RoHS, China RoHS, REACH	
Warranty	3 years	

## Software & APIs

Matrox PowerDesk for Windows	Yes	
Operating systems	Microsoft® Windows® 10 (64-bit), Microsoft Server 2016, and Windows Server 2019	
System requirements	Single available PCIe x16 slot, 4 GB of system memory	

## Accessories (sold separately)

Board-to-board framelock cable	Yes (p/n: CAB-FL-F)	
Secure cable solution	Yes (p/n: SK-SLNC-4)	N/A (built-in DisplayPort connector)

## Contact Matrox

graphics@matrox.com | North America Corporate Headquarters: 1 800-361-1408 or 514-822-6000

London Office: +44 (1895) 827300 or +44 (0) 1895 827260

Serving: United Kingdom, Ireland, Benelux, France, Spain, Portugal, Middle East, Africa

Munich Office: +49 89 62170-444

Serving: Germany, Austria, Switzerland, Denmark, Finland, Norway, Sweden, Central and Eastern Europe, the Baltic States, Greece, Turkey, Italy

© 2021 Matrox Graphics, Inc. All rights reserved. Matrox reserves the right to change specifications without notice. Matrox, PowerDesk, and Matrox product names are registered trademarks in Canada or other countries and/or trademarks of Matrox Electronic Systems, Ltd and/or Matrox Graphics Inc. DisplayPort is a registered trademark of Video Electronics Standards Association (VESA) in the United States and/or other countries. HDMI is a registered trademark or trademark of HDMI Licensing, LLC in the U.S. and/or other countries. DirectX, Microsoft, and Windows are registered trademarks of Microsoft Corporation in the U.S. and/or other countries. NVIDIA is a registered trademark of NVIDIA Corporation in the United States and other countries. PCIe® and PCI Express® are registered trademarks of PCI-SIG. All other company and product names are registered trademarks and/or trademarks of their respective owners. 01/2021

